

Evidence Based Gram Panchayat Development Plan

Identifying Gaps

What is Scientific Thinking ?

Lotus Eaters

Ulysses

"Your mind is a beautiful computer."

Rural India - Key Statistics

- Total Households in the Country= 24.47 Crore
- Total Rural Households= 17.96 Crore
- Households Excluded= 07.06 Crore (39.37%)
- **Automatically Included= 0.16 Crore (0.92%)**
- Considered for Deprivation=
 - Not reporting Deprivation= 02.01 Crore
- Household With Deprivations= 08.70 Crore
 - **Households with at least 1Deprivation = 8.70 Crore (48.51%)**
 - Households with at least 2 Deprivation = 5.34 Crore (29.78%)
 - Households with at least 3 Deprivation = 2.35 Crore (13.09%)
 - Households with at least 4 Deprivation = 0.69 Crore (3.87%)
 - Households with at least 5 Deprivation = 0.14 Crore (0.80%)
 - Households with at least 6 Deprivation= 0.02 Crore (0.14%)
 - Households with all the 7 Deprivations= 12,901(0.01%) Cr

All India Deprivation Data

- D1. Households with only one room, kaccha walls and kacha roof;
D2. No adult members between ages of 16 and 59
D3. Female headed households with no adult male member between 16 and 59;
D4. Households with disabled member and no able bodied member
D5. SC/ST Households
D6. Households with no literate adult above 25 years
D7. Landless households deriving a major part of their income from manual casual labour.

Total Households	Total Households considered for deprivation	No. of Deprived Households with deprivation criteria						
		D-1	D-2	D-3	D-4	D-5	D-6	D-7
179444721	107146815	23801942	6516189	6918321	718276	38608137	42207366	53838759
	60%	13.26%	3.63%	3.86%	0.40%	21.52%	23.52%	30.00%

Main Running Theme of Deprivation: Landless Manual & Casual Workers

Particular	Deprived Households	Landless and manual casual labour (D7)	%
Only zero room or one room with kucha walls and kucha roof (D1)	2,37,31,674	1,41,13,082	59%
No adult member between age 16 to 59 (D2)	65,15,205	30,46,605	47%
Female headed households with no adult male member between age 16 to 59 (D3)	68,96,014	37,32,041	54%
Disabled member and no able bodied adult member (D4)	7,16,045	3,25,070	45%
SC/ST households (D5)	3,85,82,225	2,08,86,654	54%
No literate adult above 25 years (D6)	4,21,47,568	2,32,18,296	55%
Landless households as manual casual labour (D7)	5,37,01,383	5,37,01,383	100%

Insecure & Uncertain Income
Unsafe and Poor quality Houses
Low on Skill & Education
Assetless

Rural India: Major Source of Household Income



- Households in India= 243.9 Mn
- Rural Households= 179.1Mn
- Main Source of Household's Income in Rural India:
 - Cultivation= 53.9 Mn
 - Manual & Casual Labour = 91.6 Mn
 - Non Agri Entreprises = 28.8 Mn
 - Others= 25.09 Mn.
 - Of which Salaried HH = 9.8 Mn
 - Of which private= 3.20 Mn

Deprivation is Rampant even in Cultivator Group



Cultivators Households out of 17,94,44,721 Rural Households	5,40,29,332	30.11%
Excluded Household	2,37,64,980	43.99%
Included Household	2,75,694	0.51%
Deprived Household considered	2,99,88,658	55.50%

Only few Have Comfort from Vagaries of Monsoon



Households owning 2.5 acres or more irrigated land with at least one irrigation equipment	61,67,156	11.41%
Household owning 5 acres or more land irrigated for two or more crop seasons	41,76,485	7.73%
Households owning 7.5 acres or more land with at least one irrigation equipment	33,16,618	6.14%
Unirrigated land	2,94,66,494	54.54%



Village/ GP

Empowerment Gap Analysis

Questionnaire

SI No	Key parameters	Weightage		Remarks
	Infrastructure parameters			
1.	% households engaged exclusively in			
	A. Farm activities			
	B. Non-farm activities	5		>50%
2.	Availability of banks(Yes=1, No=2)	5	5	If yes then 5
3.	If not available in the village; the distance range code of the nearest place where facility is available is given; (<3km-1; 3-5km-2; 5-10 km-3, >10Km-4)			For option 1- 4; 2-3 3-2, option 4=0
4.	If bank not available in the village; Availability Of bank/Business Correspondent with internet connectivity?		2	If yes and answer of question 5 is 'None'
5.	Availability of ATM (yes-1;No-2)		1	If yes
6.	Whether the village is connected to All weather road (Yes-1;No-2)	5		If yes
7.	Whether village has an internal cc/ brick road (Yes-1;No-2)	4		If yes

8.	Availability of Public Transport (Bus-1;Van-2;Auto-3;None-4)	3	For option 4=0
9.	Availability of Internet Café/Common Service Centre (Yes-1;No-2)	2	
10.	Availability of electricity for domestic use (1-4 hrs-1; 5-8 hrs-2; 9-12 hrs-3; >12 hrs-4; No electricity-5)	4	For option 1=1; 2=2; 3=3; 4=4; 5=0
11.	Availability of Public Distribution System(PDS) (Yes-1;No-2)	1	If yes
12.	Availability of markets (Mandis-1; Regular market-2;weekly haat-3; none-4)	3	
13.	Availability of Piped tap water (1) 100% habitations covered (2) 50 to 100% habitations covered (3) <50% habitation covered (4) only one habitation is covered (5) Not Covered	4	Option 1 =4 Option 2 =3 Option 3 = 2 Option 4 = 1 Option 5 = 0
14.	Availability of Telephone Services (Landline-1; Mobile-2; Both-3;None-4)	2	
15.	Total no of household using clean energy (LPG/Bio gas)	4	<25% = 1 25%-50%=2 50%-75%=3 >75% =4 No Household with Clean Fuel = 0
16.	No of household with kuccha wall and kuccha roof Kutcha Wall is ... 1 Grass/thatch/bamboo etc. 2 Plastic/polythene 3 Mud/unburnt brick 4 Wood 5 Stone not packed with mortar Kutcha Roof Is... 1 Grass/thatch/bamboo/wood/mud etc. 2 Plastic/polythene 3 Hand made tiles	5	<20% = 5 20%-40%=4 40%-60%=3 60-80%=2 >80% = 1
17.	Availability of Post office/Sub-Post office (Yes-1;No-2)	1	
18.	Availability of School (Primary-1; Middle School-2; High School-3; Senior Secondary School-4;No School-5)	4	Option 4 = 4 Option 3=3 Option 2=2 Option 1 = 1 Option 5 = 0
19.	Availability of Vocational Educational Centre/ITI/RSETI/DDU-GKY (Yes-1;No-2)	2	If yes
20.	Availability of Sub centre /PHC/CHC (PHC-1; CHC-2; Sub Centre-3)	3	
21.	If not available in the village; the distance range code of the nearest place where facility is available is given; (<5km-1; 5-10 km-2; >10 km-3)		<5km- 2 5-10 km-1 >10 km-0
22.	Availability of Veterinary Clinic Hospital (Yes-1;No-2)	2	
23.	If not available in the village; the distance range code of the		<5km- 1

	nearest place where facility is available is given; (<5km-1; 5-10 km-2; >10 km-3)		>5 km-0
24.	Availability of drainage facilities (Closed drainage-1; open pucca drainage covered with tiles slab-2; open pucca drainage uncovered-3; open kuccha drainage-4; no drainage-5)	4	Option 1=4 Option 2 = 3, Option 3 =2, Option 4=1 Option 5 = 0
Economic development and livelihoods			
25.	Availability of Soil Testing Centres (Yes-1;No-2)	2	If yes
26.	Availability of government Seed Centres(Yes-1;No-2)	1	If yes
27.	Availability of Fertilizer Shop (Yes-1;No-2)	1	If yes
Health, nutrition and sanitation			
28.	Community waste disposal system (Yes-1;No-2)	2	If yes
29.	Community bio gas or recycle of waste for production use (yes-1;No-2)	3	If yes
30.	Is the village Open Defecation Free(ODF) (Yes-1;No-2)	3	If yes
31.	Availability Of Aanganwadi Centre(Yes-1;No-2)	1	If Yes
32.	No of total children in the age group of 0-3 years		
33.	No of children aged 0-3 years registered under Aanganwadi	2	If >80%=2(MCTS) 60%-80%=1 <60%=0
34.	No of children aged 0-3 years immunized	3	If >95% =3(MCTS) 90-95%=2 80-90%=1 Else 0
35.	No of children categorized as Non-Stunted as per ICDS record	4	>90% = 4,80-90%=3 70-80%=2,60-70%=1 <60%=0
Women empowerment			
36.	No. of households mobilized into SHGs	3	If >= 80% = 3, If 50% to 80% =2, If 25% to 50% = 1, Less than 25%= 0
37.	No. of households mobilized into Producer Groups (PGs)	2	If >= 25% = 2 ; 10%-25% = 1, Else 0
38.	No. of households supported by village based Agricultural Extension Workers	1	If >= 25% = 1; Else 0
39.	No. of households supported by village based Livestock Extension Workers	1	If >= 25%; Else 0
Financial Inclusion			
41.	No. of SHGs accessed bank loans	3	If >= 80% = 3, If 50% to 80% =2, If 25% to 50% = 1, Less than 25%= 0
	TOTAL	100	

Nomination of a State Nodal Officer

- **SRLM is the nodal agency for Baseline survey.**
- **Each SRLM is required to appoint a senior State Mission Professional as the state nodal person;**
- **Preferably, State Mission Director may act as the State Nodal Officer.**
- **Similarly, each Mission Antyodaya district will have the PD, DRDA/DRDC as the district nodal officer.**

Method of Assessment

The canvassing (CRP) teams are expected to interact with:

- **Ward Member/Sarpanch,**
- **GP secretary, Elected office bearers,**
- **ICDS workers, health workers,**
- **school teachers, village revenue officials, NGOs,**
- **front line workers of other line departments, representatives of community based organizations etc. and collect information.**
- **The team are also advised go around the villages and cover all habitations including the SC and ST habitations.**

Training of Resource Teams

- The training programme for the functionaries under supervision and guidance of NIRD&PR.
- The training would be organized in a cascade mode.
- NIRD will also train about 60 professionals empanelled with them and train them as resource persons for conducting training in the States.
- Each SRLM will identify team of 6 - 8 resource persons from each district covered under Mission Antyodaya.
- These resource persons may preferably be chosen from the persons engaged earlier in Intensive Participatory Planning Exercise (IPPE-II).
- The Members of the national team will undertake orientation of the identified district resource persons.
- For each state atleast two national resource persons will be allocated for training district resource persons.
- The district resource persons will impart training to CRPs in intensive areas of NRLM and Grameen Rozgar Sewaks in districts which are presently not covered under NRLM.
- **The State Governments could also involve students of higher educational institutions in this planning exercise and associate one student with one team for each Gram Panchayat. These students would also get training along with the CRPs and GRS.**

Duration of Assessment

- **The States are required to complete the assessment in identified GPs in a fortnight (September 3-28 , 2018).**
- **This would require deployment of adequate number of trained teams.**
- **Each team may consist of 1 CRP identified from the same area and 1 support person with experience in operating android device.**
- **It is estimated that each team of two persons can complete/collect information from at least 2-3 villages per day and 1 GP in two days.**
- **The States are also required to closely monitor and supervise the entire process of assessment.**
- **At the Block level the BDO/BPM may be the person responsible for the task.**

Validation by Gram Sabha

- **The teams would be required to get all the information validated by the Gram Sabha organized during the fortnight.**
- **The team would be required to download a print copy of the information collected on each village and place it before the Gram Sabha for approval.**
- **Based on the feedback, necessary changes will have to be made.**



MISSION ANTYODAYA
Framework
Poverty Quit India 2022
Story of 44,111 GP

PHASE – I (2017-2020)

Making a Real Difference to the lives of 1 Crore households in 5000 Rural Clusters (50,000 Gram Panchayats) in 1000 days

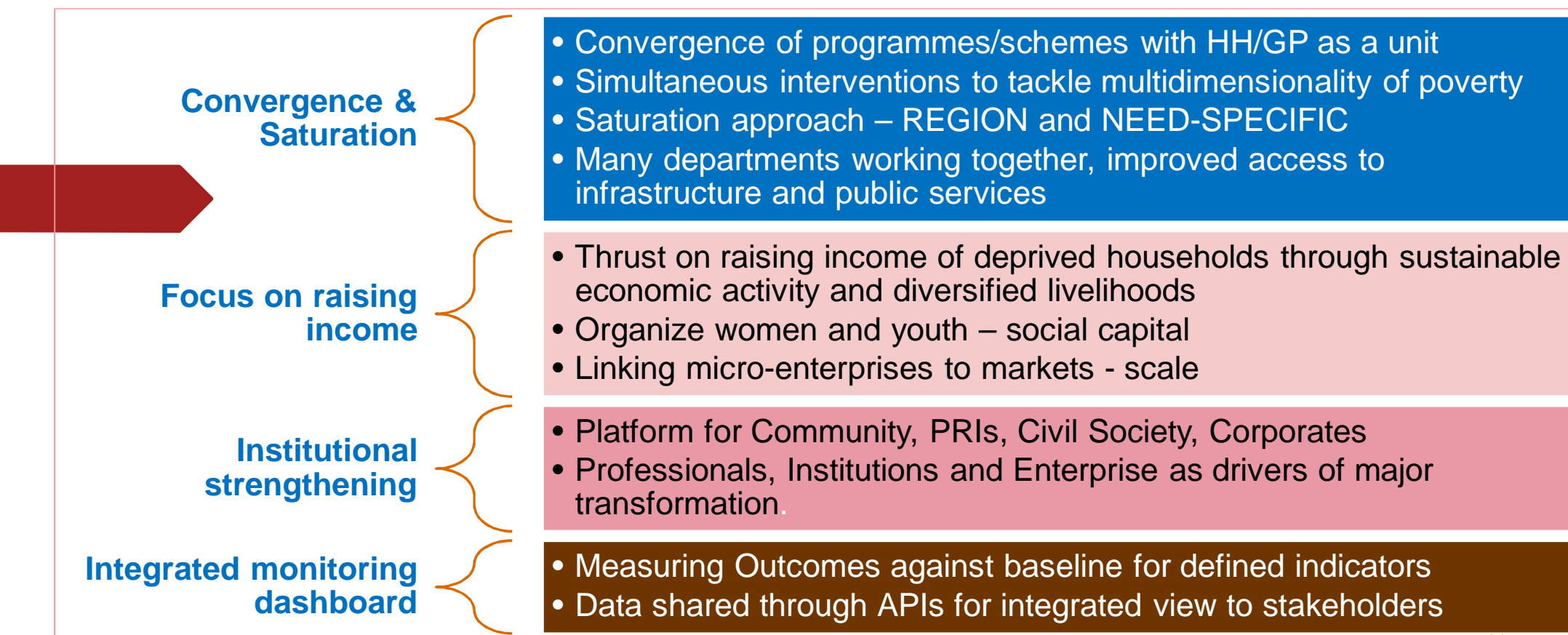


What is Mission Antyodaya?

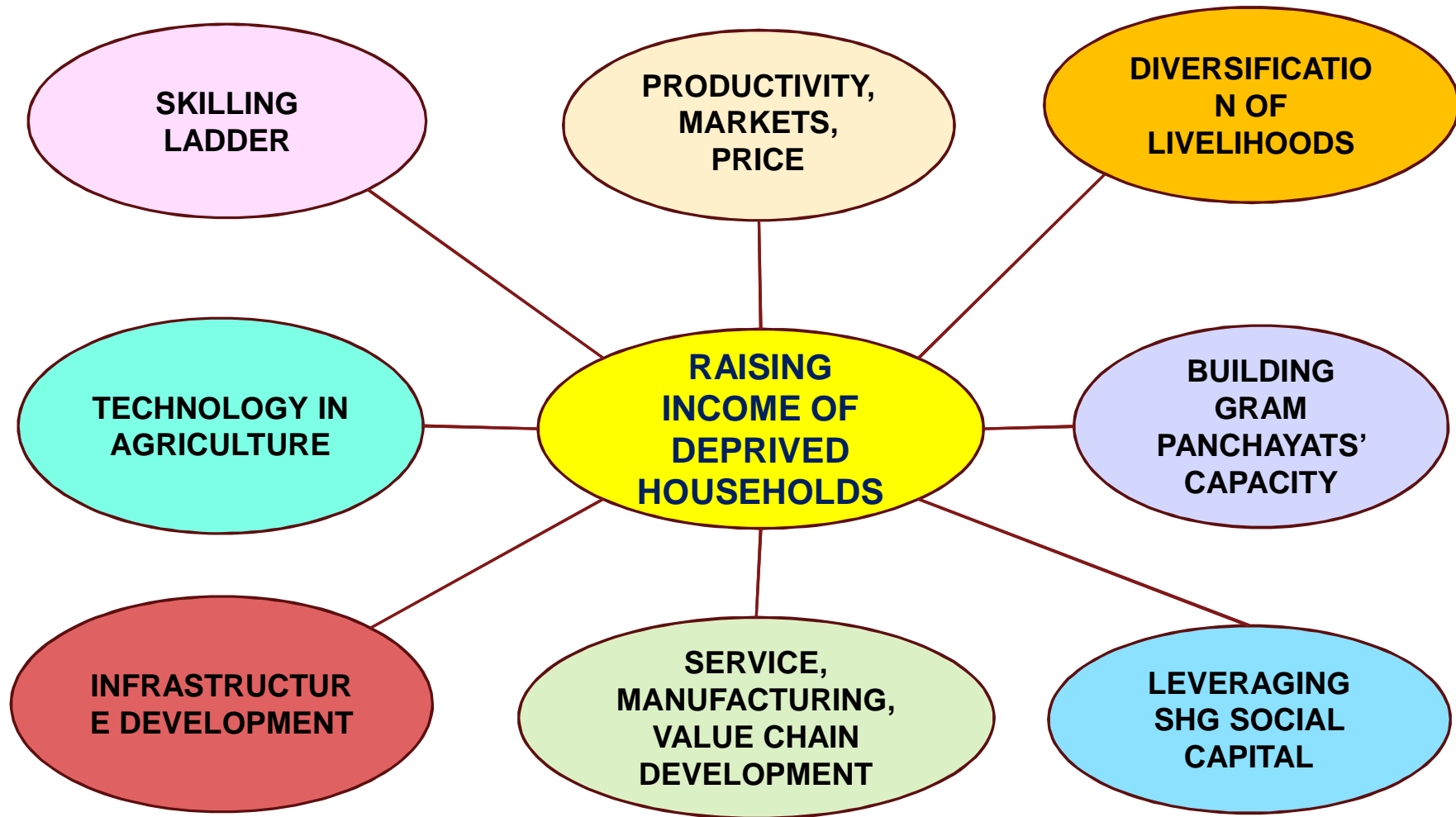
Mission Antyodaya is an accountability and convergence framework for transforming lives and livelihoods on measurable outcomes.

What is Mission Antyodaya Framework?

Mission Antyodaya is an accountability and convergence framework for transforming lives and livelihoods on measurable outcomes.

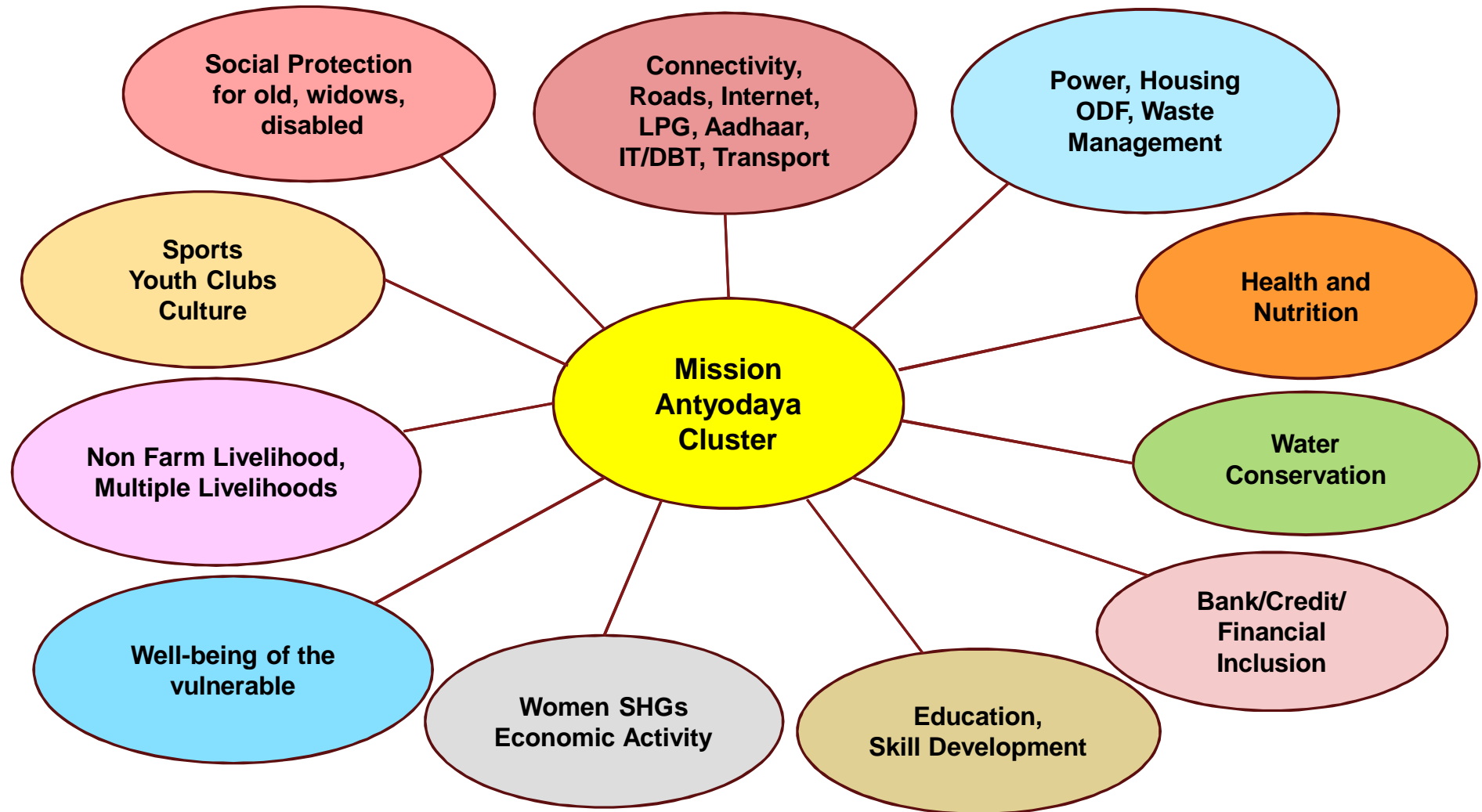


...involving convergence of schemes to raise income of such households...



[Back](#)

...through cluster approach



Are We Prepared for the Poverty Quit India Movement? -

-
- **Connectivity :**
 - » Rural Roads (PMGSY), Communication, Jandhan, Mobile, SECC, Aadhaar, Digital Payment platforms
- **Our New Governance Frame:**
 - » Identity, Selection of Beneficiary, Ground-Trothing, Space Techonology
- **MGNREGA**
 - 80% MGNREGA workers Adhaar linked. Water Conservation & Road Standards in MGNREGA.
 - Increasing irrigation coverage under PMKSY/MGNREGA
- **3.44 Crore women in SHGs – to reach 4-5 Crores by 2019.**
 - Micro Plan for diversifying livelihoods of 1 Crore HHs – DAY - NRLM.
 - Effective SHGs in 74,000 GPs, over 3000 Intensive Deendayal Antyodaya Yojana – NRLM Blocks
- **95-100% IT/DBT in MGNREGA & PMAY (G).**
- **ODF villages – social capital**
- **900+ SAGY GPs & 300 Rurban Clusters.**

Stamping Out Poverty

Karenghe Aur Kar Ke Rahenge

- **Convergence reduces poverty, raises incomes– IRMA**
- **Women SHGs - improved education, health, nutrition.**
- **'Islands of Excellence' by saturation-mode Hivre Bazaars**
- **Leveraging Bank loans promotes an enterprise model.**
- **Targeted coverage – Ujwala, SBM, PMAY, Skills, Power, Roads, internet**
- **GSA,EGSA**
- **Driving Economic Enterprise with Physical and Social Infrastructure.**
- **5000 thriving Rural Clusters - will trigger similar action for Poverty free 2022.**

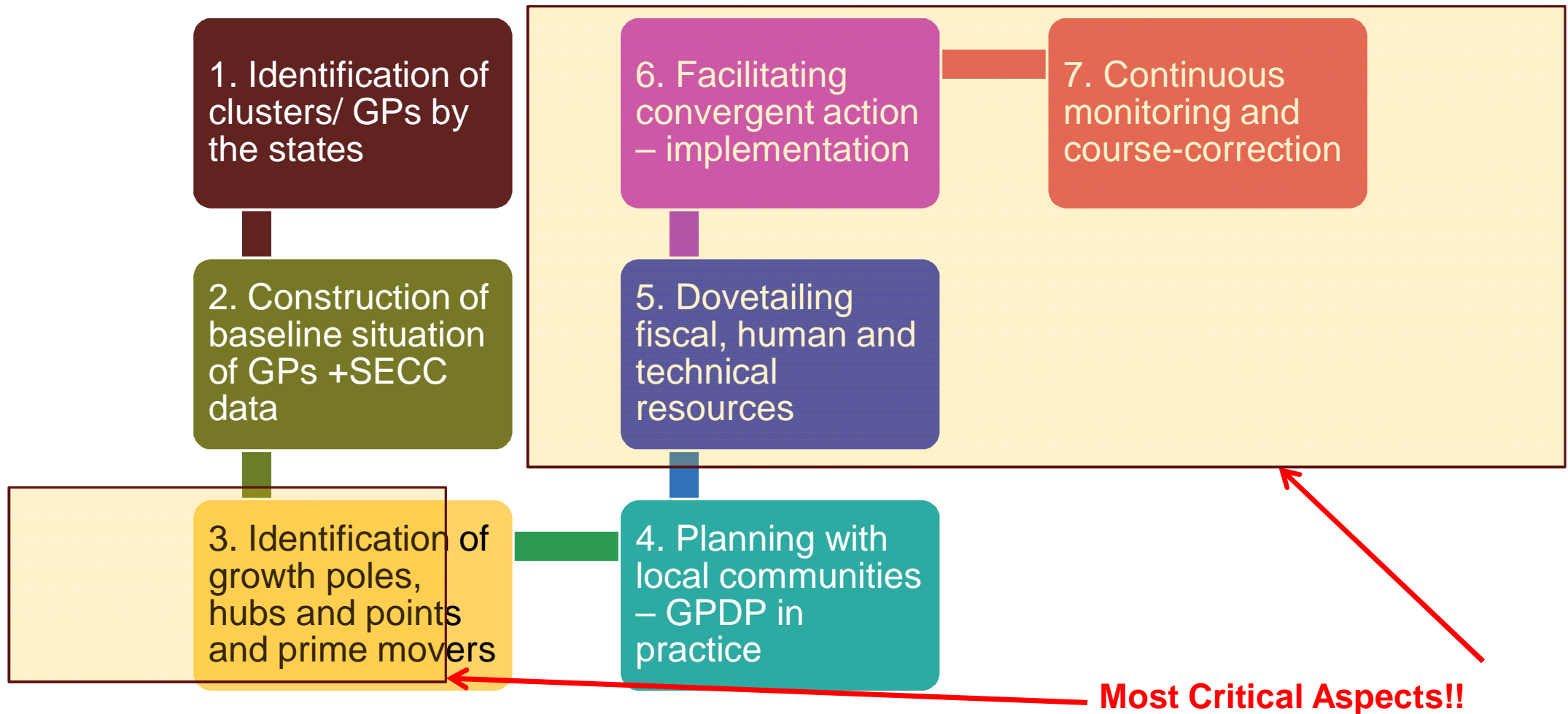
What is new about Mission Antyodaya?

- **Convergence of programmes with HH/GP as unit.**
- **Saturation approach.**
- **Simultaneous interventions to tackle poverty.**
- **Many Departments working together.**
- **Thrust on sustainable economic activity.**
- **Linking micro-enterprises to markets - scale.**
- **Measuring Outcomes against baseline.**

What is new with Mission Antyodaya?

- Response to multi-dimensional nature of poverty under leadership of States
- More than **Rs. 4 lakh crore** GoI annual outlay towards social sector
- Convergence from Central Ministries to Gram Panchayat level
- **Social capital** built through SHG institutions as key enabler. Selection of Gram Panchayats by States based upon demonstrated social capital
- Measuring Outcomes against baseline for defined indicators
- SECC and Baseline Survey during *Swachhta Pakhwada* to provide Analytical base to identify gaps and design area specific interventions
- Based on **learning from convergence-based interventions** in the State and Centre
- Data shared by scheme MISs through APIs and use of LGD codes for integrated web-based view to stakeholders

What do we do with data on Village/GP



It's a Tool and Not a Budget Line

- Mission Antyodaya is a framework, not a separate scheme
- Convergence of schemes along with HR support at GP/Cluster level, in saturation mode is at the core of this framework
- Aggregation of resources at GP level
- Unspent admin fund can be utilised
- Utilisation of human resources of SHG network, VOs and trained CRPs by the GP for specific functions
- Convergent and synergetic actions on defined action points, driven by strong analytics support
- Mission Antyodaya as enabling framework to achieve livelihood development and diversification

Phase wise Implementation of Mission Antyodaya

- **In the First Phase the central objective of Mission Antyodaya is:**
- **to bring one crore rural households out of poverty; and**
- **Make 50,000 GPs/5,000 clusters poverty free by 2020**
- **The Ministry of Rural Development shared with States:**
 - **a concept note and strategy for accelerated development in 50,000 GPs/5,000 clusters by 2020.**
 - **State Governments have identified GPs to be covered under first phase of Mission Antyodaya from 2017-20.**
 - **Baseline Survey was taken up to map the progress in these GPs 2017-2020 period**

First Phase Selection of Gram Panchayats/Cluster of GPs –

- **Open Defecation Free GP**
- **DAY NRLM SHG GP**
- **Mission Water Conservation GPs**
- **Sansad Adarsh Gram Yojana GP**
- **Rurban Cluster GP**
- **Crime free/Dispute free GP**
- **Any other State selected GP for special coverage.**
- **Award winning GP Pradhans.**

First Phase :Allocation Criteria of Panchayats to States/UTs

1. Mission Antyodaya envisages developing 50,000 Gram Panchayats/Rural Clusters as poverty free.
- 2.To maintain equity among the States/UTs in allocation of GPs under Mission Antyodaya and also give due weight to the deprivation.
 - (a) A minimum mandatory coverage of certain percentage of total GPs in each States= 38,731 GPs
 - (b) Allocation of rest of the GPs from the balanced pool based on factor of intensity of deprivation= 11,269
 - (c) Allocation has also been made in a manner that no state gets more than 20% of its total GP covered.

DASHBOARD SNAPSHOT★

TOTAL GP USERS
REGISTERED

43806

USERS REGISTERED FOR
MA SELECTED GP

38011

APPROVED GP USERS

37118

GPS MOBILE
OTP VERIFIED

32350

GPS DATA
DOWNLOADED

41716

GPS DATA
UPLOADED

37834

★ As on 15/11/2017

Major Activities undertaken under this program

- States took up the task of collecting comprehensive information on the GPs
- An assessment of village level infrastructure facilities and amenities
- Identification by States- 5000 Rural clusters comprising of approx. 50,000 GPs which that are to be made poverty free within 1000 days
- Mapping of these GPs to standardized and updated LGD Coded along with mapping to NREGA Soft
- Extraction of Village level infrastructure Data of Census 2011
- Extraction of ODF Status Data availability of piped drinking water data from Ministry of Drinking Water and Sanitation
- Identification of parameters related to Infrastructure, human development and economic development for the questionnaire

Major Activities undertaken under this program

- Development of software (Both Mobile App and Web Application) for electronic Data collection of baseline survey from the field
- Training of the National trainers and State master trainers for subsequent training of District, Block, and GP Level user
- Data Management and technical support to the field officials
- Data Analysis and MIS Generation
- Ranking of Gram Panchayats

MIS on Basis Parameters [STATEWISE]

** As on 15/11/2017

#	State Name	GP Size (Count of Villages in GP)			Households			Population			Area (Ha)			Irrigated Area (In %)		
		Average	Max	Min	Average	Max	Min	Average	Max	Min	Average	Max	Min	Average	Max	Min
1	ANDHRA PRADESH(28)	1.25	24	1	1212.44	342000	5	3397.97	37349	4	2248.24	531618	0.16	28.86	0.23	0
2	ARUNACHAL PRADESH(12)	1.97	6	1	134.06	705	10	587.71	4934	80	6433.34	30000	10	22.79	3.76	0
3	ASSAM(18)	8.26	37	1	2403.38	13977	127	11551.84	61679	549	7048.69	1305811.423	51.6	10.59	3.76	0
4	BIHAR(10)	4.93	40	1	2805.54	148067	62	13616.72	90753	326	1558.05	172231.73	5	40.24	0.35	0
5	CHHATTISGARH(22)	1.75	11	1	451.2	45680	55	1893.06	7994	291	2284.32	759596	0.63	22.82	11.15	0
6	DADRA AND NAGAR HAVELI(26)	2.25	4	1	3708	5508	2066	15041.25	20017	9666	2312.06	3948.28	1449.98	12.13	5.21	0.11
7	DAMAN AND DIU(25)	1	1	1	259	259	259	1030	1030	1030	69	69	69	3.62	3.62	3.62
8	GUJARAT(24)	1.12	9	1	541.81	7049	5	2457.52	21795	91	75903.24	8905423	0.1	24.9	3.41	0
9	HARYANA(6)	1.15	5	1	625.07	8340	24	3417.54	25000	274	1818.75	880430	5.5	25.97	0.35	0
10	HIMACHAL PRADESH(2)	4.79	19	1	613.69	1816	292	2361.83	4988	1245	653.62	3538.72	90	8.15	1.35	0
11	JAMMU AND KASHMIR(1)	1.7	5	1	460.26	3450	125	2849.16	24783	200	326.99	2016	23	32.87	1.59	0
12	JHARKHAND(20)	6.43	32	1	1355.32	19400	37	6454.89	22532	185	3441.7	100000	8	14.3	1.99	0
13	KARNATAKA(29)	5.35	27	1	1587.95	28230	43	6626.06	94766	211	10457.43	6792000	1	42.19	35.13	0
14	KERALA(32)	1.56	7	1	8847.4	70289	24	30468.06	94701	2540	8628.16	332527.1343	3.36	10.18	1.46	0
15	MADHYA PRADESH(23)	2.35	16	1	549.14	3600	1	2561.97	17704	2	2221.97	833602	0.5	15.03	0.05	0
16	MAHARASHTRA(27)	1.43	14	1	531.5	13001	4	2435.28	90002	108	9199.91	12948346	1	11.56	7.01	0
17	MEGHALAYA(17)	1	1	1	94.4	3854	7	490.37	11383	31	7769.78	2019200	0.03	10.42	8.55	0
18	MIZORAM(15)	1	1	1	245.33	1040	35	1174.58	5230	133	7975.85	270000	4	8	1.14	0
19	NAGALAND(13)	1	1	1	450	3374	29	2418.66	17775	138	16170.64	1382600	0.08	12.59	1.59	0
20	ODISHA(21)	6.13	28	1	1393.18	97522	2	5158.45	22330	5	36246.82	16116173	0.259979	0.74	0.05	0
21	PUNJAB(3)	1.08	16	1	415.42	7204	14	2080.56	15982	71	571.89	12875	2.44	74.58	1.14	0
22	RAJASTHAN(8)	4.42	18	1	1222.08	55144	109	5900.01	60000	547	4003.79	623997.08	11	17.98	1.73	0
23	TAMIL NADU(33)	1.04	6	1	1024.84	60840	113	3457.91	55803	210	2478.14	1535325	0.46	30.41	21.45	0
24	TELANGANA(36)	1.18	14	1	699.2	73331	1	2439.93	50622	1	1298.97	60124	2.5	27.58	0.71	0
25	TRIPURA(16)	1.22	4	1	746.21	5140	236	2896.6	11964	896	1936.77	172716	0.374	9.68	0.62	0
26	UTTAR PRADESH(9)	1.77	17	1	532.54	16001	1	3228.6	100002	1	650.25	808327	1	38.17	0.26	0
27	UTTARAKHAND(5)	1.96	15	1	260.58	5350	14	1324.01	28506	67	1133.16	888014	1.02	5.67	0.11	0
28	WEST BENGAL(19)	12.45	59	1	4514.22	20667	253	20977.75	181400	1202	3931.93	222500.47	0.00189	26.23	2.84	0



Click for Details

Ranking Parameters used for Scoring GPs under Mission Antyodaya

Sr. No	Parameters	Weightage / Marks
1	Basic Parameters	4
2	Key Infrastructure Parameters	64
3	Economic development and Livelihood	4
4	Health, Nutrition and Sanitation	18
5	Women Empowerment	7
6	Financial Inclusion	3
	<i>TOTAL</i>	<i>100</i>

** As on 28/08/2018

Mission Antyodaya Scorecard

GPs Having Total Score

44111

Data Uploaded for Total
Gram Panchayats

43158

GPs having
Total Score < 75

253

GPs having
Total Score \geq 75

Score = 74

140

Score = 73

172

Score = 72

206

Score = 71

271

Score = 70

297

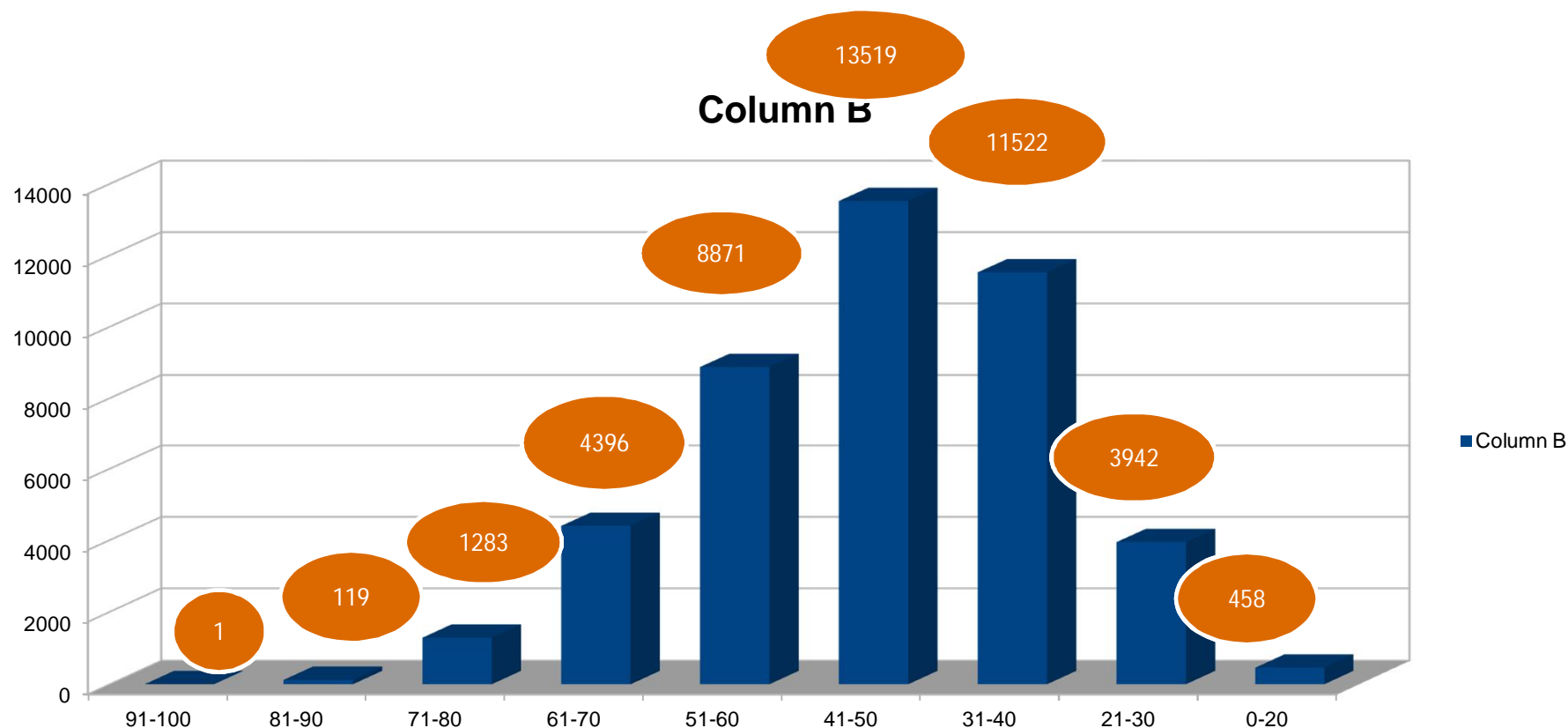
Score < 70

42412

** As on 27/08/2018

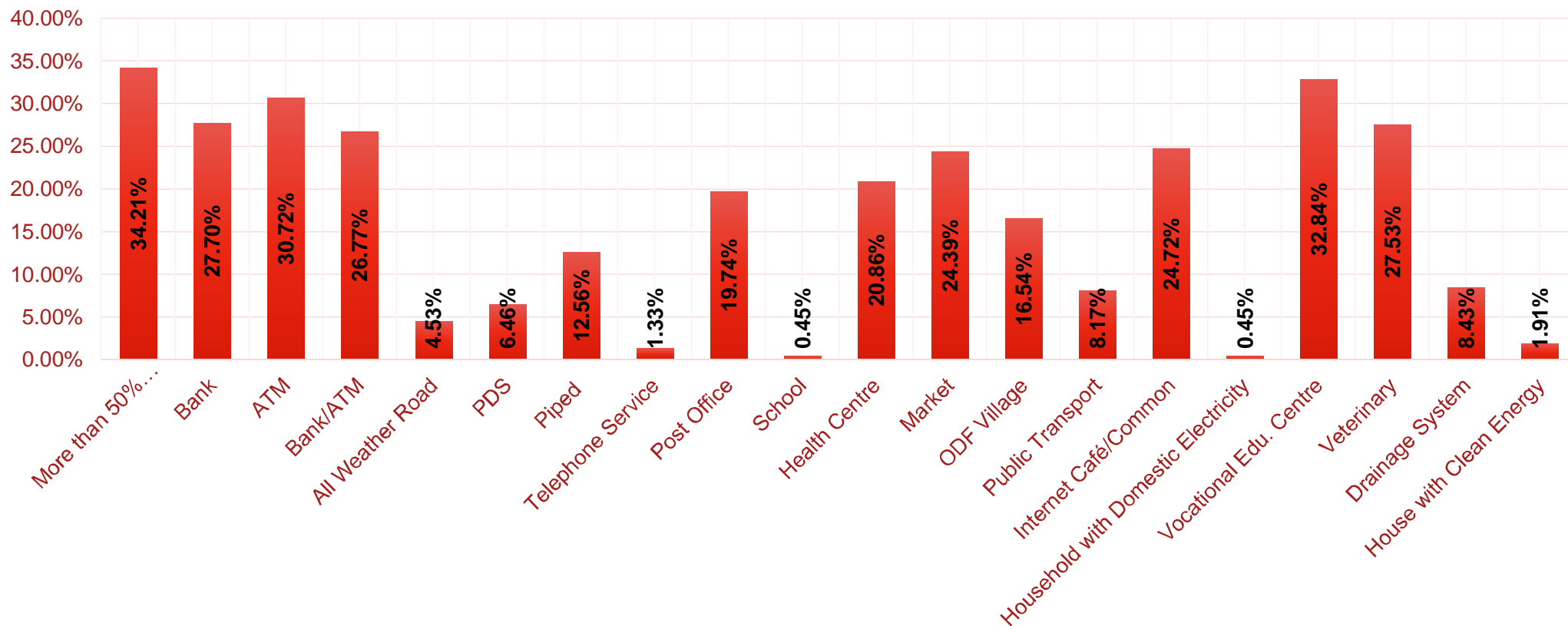
Ranking and Score wise Analysis of GPs

Split of Number of GPs having Scores [between 0 – 95] out of total GPs =44,111



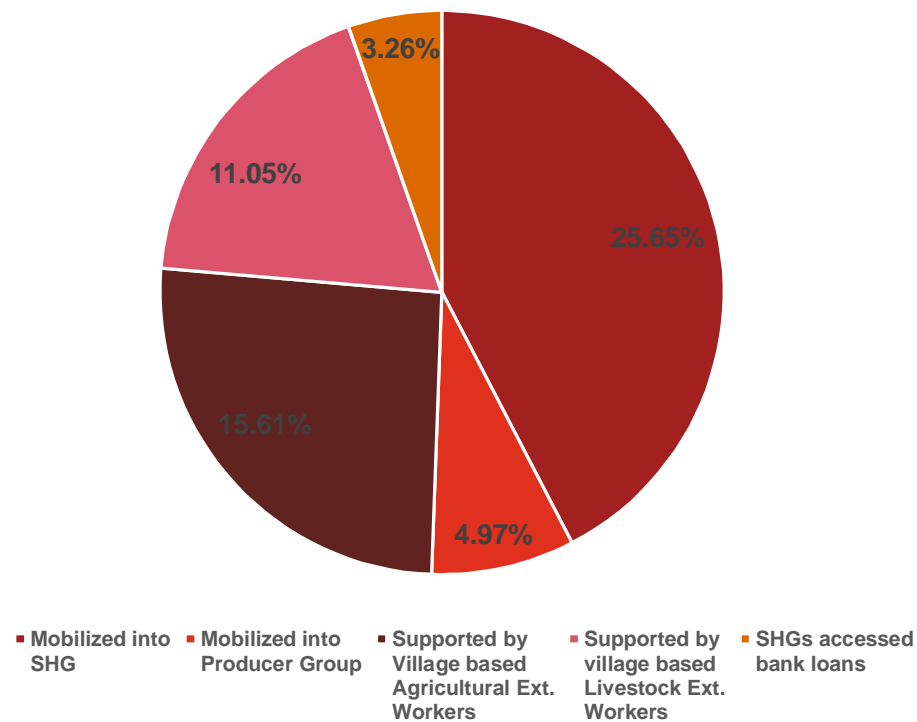
Status of 44111 Gram panchayats – Analysis-I

% of Villages with Non-Availability



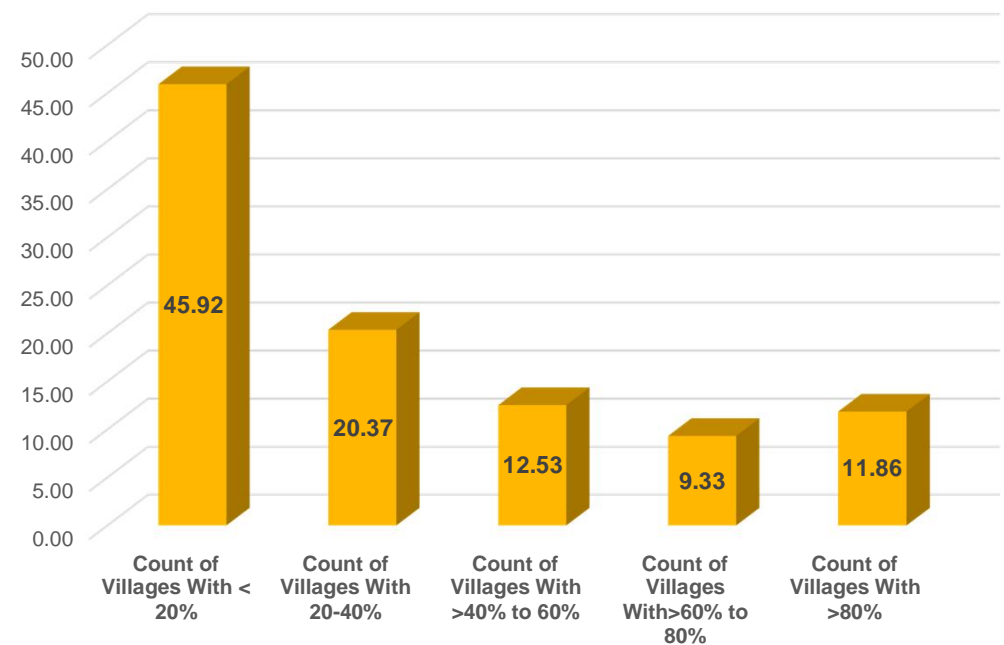
• Status of 44111 Gram panchayats – Analysis-II

% of Households



Women Empowerment

% of Villages with Kutcha Houses



Rural Housing

Empowerment-Gap Analysis

Mission Antyodaya Baseline Survey 2017

Total Villages= 111049

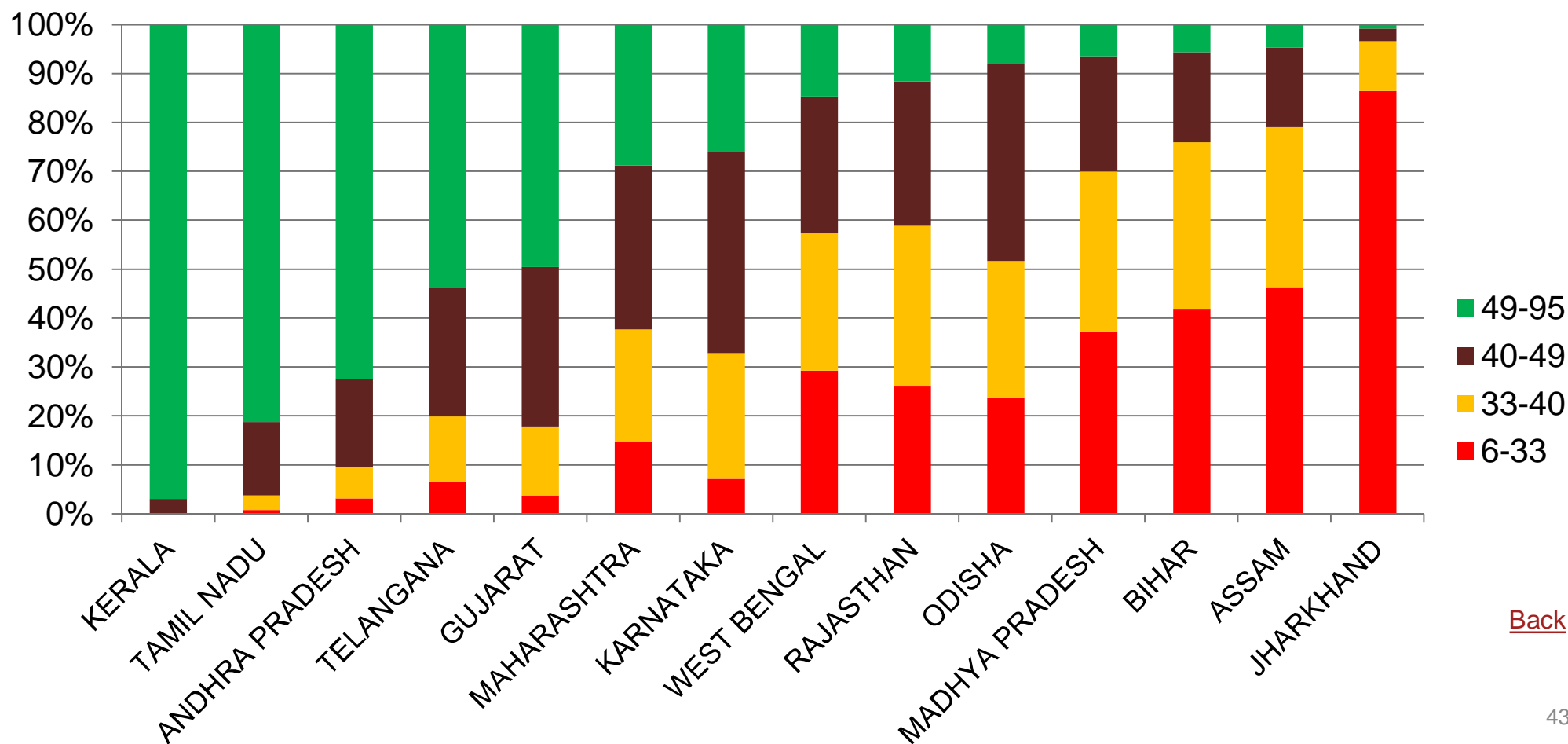
Total Villages= 111049

Availability of banks	17181	15.47
Whether the village is connected to All weather road	81452	73.35
Whether village has an internal cc/ brick road	63227	56.94
Availability of Public Transport	73593	66.27
Availability of School	95494	85.99
Availability of electricity for domestic use (in Hrs)	106069	95.52
Availability of Public Distribution System(PDS)	62341	56.14
Availability of markets	28031	25.24
Availability of Piped tap water	54766	49.32
Availability of Telephone Services	102132	91.97
Availability of Post office / Sub-Post office	28992	26.11

Availability of Vocational Educational Centre/ITI/RSETI/DDU-GKY	10252	9.23
Availability Of Veterinary Hospital/Clinic	17459	15.72
Availability of drainage facilities	67542	60.82
Soil Testing centre	9438	8.5
Govt. Seed centre	13616	12.26
Fertilizer Shop	19466	17.53
Community waste disposal system	21174	19.07
Community bio gas or recycle of waste for production use	15029	13.53
Availability Of Aanganwadi Centre	90724	81.7
Availability of Internet Cafe/Common Service Centre	22613	20.36
Is the village Open Defecation Free(ODF)	48549	43.72

Observations from baseline survey

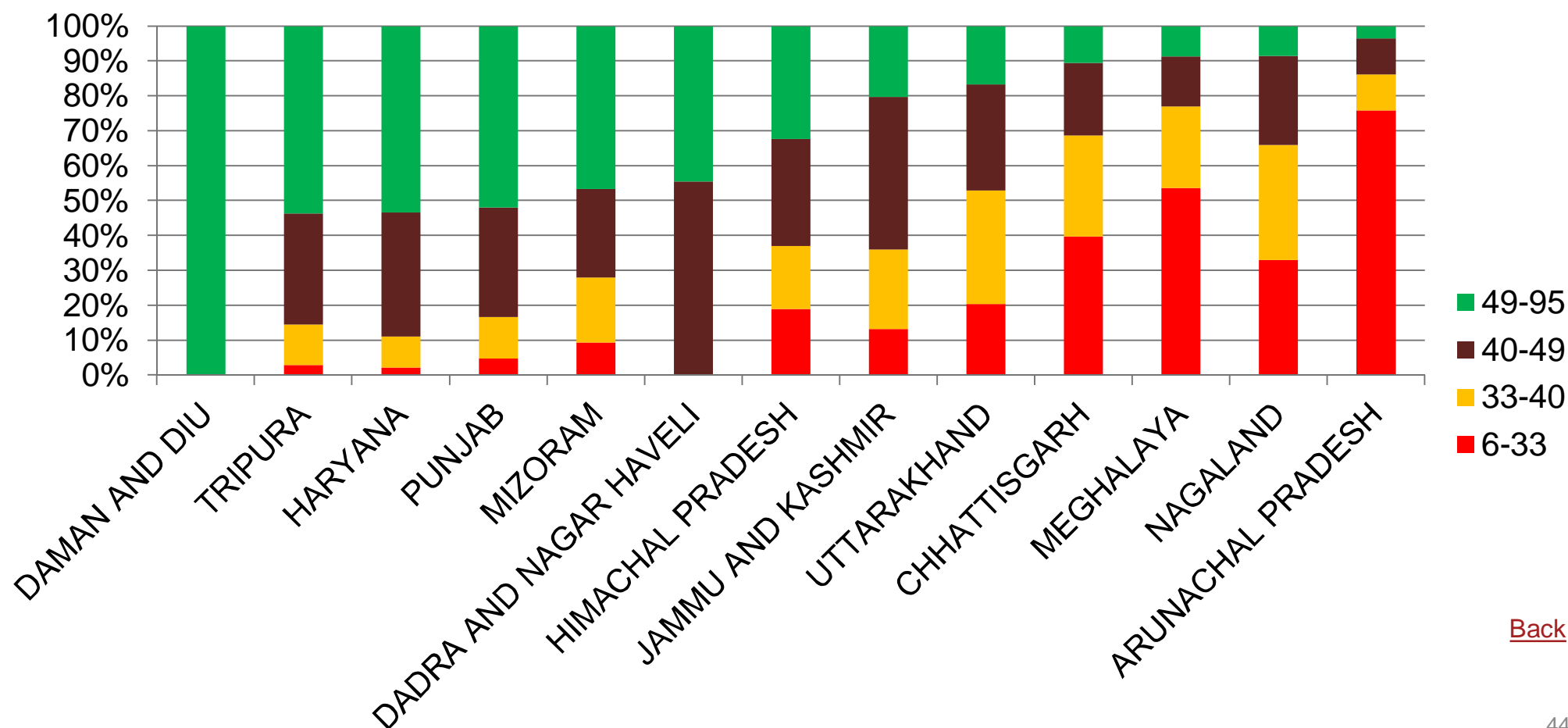
Percent of GPs in a score range: Bigger States



[Back](#)

Observations from baseline survey, contd...

Percent of GPs in a score range: Small States



[Back](#)

States having headway can focus more on economic activities and linkages

SI No	Area	Assam	Jharkhand	Karnataka	TamilNadu	West Bengal
1	All weather road connectivity	84%	50%	79%	90%	66%
2	Internal brick road	65%	80%	74%	92%	82%
3	PDS in village	72%	50%	42%	97%	49%
4	Drainage facility in GP	48% No drainage; 42% Open katcha; Rest closed or open Pucca	78% No drainage; 11% Open katcha; ; Rest closed or open Pucca	12% No drainage; 38% Open katcha; Rest closed or open Pucca	33% No; drainage 20% Open Kutcha; Rest closed or open Pucca	58% No drainage; 29% Open katcha; Rest closed or open Pucca
5	Education: Availability of schools in GP	55% Primary 16% Middle 16% High 4% Secondary 9% None	51% Primary 29% Middle 5% High 2% Secondary 13% None	39% Primary 24% Middle 14% High 4% Secondary 19% None	35% Primary 33% Middle 18% High 12% Secondary 2% None	59% Primary 9% Middle 10% High 5% Secondary 17% None Back

Source: Baseline survey in Mission Antyodaya GPs

States having headway can focus more on economic activities and linkages contd...

SI No	Area	Assam	Jharkhand	Karnataka	Tamilnadu	West Bengal
6	Electricity	6% No electricity 9% 1-4 hrs. 30% 5-8 hrs. 37% 9-12 hrs. 19% >12 hrs.	8% No electricity 25% 1-4 hrs. 24% 5-8 hrs. 34% 9-12 hrs. 8% >12 hrs.	2% No electricity 3% 1-4 hrs. 10% 5-8 hrs. 24% 9-12 hrs. 60% >12 hrs.	<1% No electricity 2% 1-4 hrs. 2% 5-8 hrs. 13% 9-12 hrs. 83% >12 hrs.	4% No electricity 1% 1-4 hrs. 5% 5-8 hrs. 21% 9-12 hrs. 68% >12 hrs.

[Back](#)

State Name	Total Number Of Villages	Primary	%	Middle School	%	High School	%	Senior Secondary School	%	No School	%
All India	111049	52563	47.33	23603	21.25	12162	10.95	7166	6.45	15555	14.01
ANDHRA PRADESH	2822	1248	44.22	429	15.2	896	31.75	95	3.37	154	5.46
ARUNACHAL	213	87	40.85	47	22.07	11	5.16	6	2.82	62	29.11
ASSAM	4584	2663	58.09	661	14.42	654	14.27	151	3.29	455	9.93
BIHAR	8763	3067	35	3292	37.57	570	6.5	341	3.89	1493	17.04
CHHATTISGARH	4077	1485	36.42	1591	39.02	416	10.2	423	10.38	162	3.97
GUJARAT	3150	2332	74.03	122	3.87	480	15.24	165	5.24	51	1.62
HARYANA	1122	277	24.69	272	24.24	182	16.22	328	29.23	63	5.61
HIMACHAL	344	87	25.29	47	13.66	15	4.36	40	11.63	155	45.06
J&K	471	89	18.9	212	45.01	105	22.29	35	7.43	30	6.37
JHARKHAND	5747	2881	50.13	1691	29.42	339	5.9	125	2.18	711	12.37
KARNATAKA	6173	2462	39.88	1435	23.25	861	13.95	248	4.02	1167	18.9
MP	10282	4227	41.11	3765	36.62	744	7.24	521	5.07	1025	9.97
MAHARASHTRA	5632	3018	53.59	811	14.4	938	16.65	397	7.05	468	8.31
MANIPUR	77	46	59.74	9	11.69	11	14.29	6	7.79	5	6.49
MEGHALAYA	554	304	54.87	155	27.98	36	6.5	18	3.25	41	7.4
MIZORAM	183	9	4.92	53	28.96	100	54.64	21	11.48	0	0
NAGALAND	231	61	26.41	97	41.99	58	25.11	13	5.63	2	0.87
ODISHA	11536	5410	46.9	1680	14.56	1510	13.09	181	1.57	2755	23.88
PUNJAB	2090	717	34.31	434	20.77	352	16.84	432	20.67	155	7.42
RAJASTHAN	8642	3110	35.99	1720	19.9	1222	14.14	1590	18.4	1000	11.57
SIKKIM	81	26	32.1	7	8.64	22	27.16	18	22.22	8	9.88
TAMIL NADU	2676	943	35.24	869	32.47	489	18.27	328	12.26	47	1.76
TELANGANA	1278	621	48.59	186	14.55	386	30.2	30	2.35	55	4.3
TRIPURA	330	33	10	59	17.88	136	41.21	95	28.79	7	2.12
UTTARAKHAND	2670	1065	39.89	385	14.42	170	6.37	320	11.99	730	27.34
UP	19671	11894	60.46	2884	14.66	702	3.57	717	3.64	3474	17.66
W. BENGAL	7443	4390	58.98	680	9.14	733	9.85	363	4.88	1277	17.16

				Villages With Availabilit y Of School							
	Total Number Of Villages	Primary	%	Middle School	%	High School	%	Senior Second ary School	%	No Schoo l	%
All India	111049	52563	47.33	23603	21.25	12162	10.95	7166	6.45	15555	14.01
MANIPUR	77	46	59.74	9	11.69	11	14.29	6	7.79	5	6.49
MEGHALAYA	554	304	54.87	155	27.98	36	6.5	18	3.25	41	7.4
MIZORAM	183	9	4.92	53	28.96	100	54.64	21	11.48	0	0
NAGALAND	231	61	26.41	97	41.99	58	25.11	13	5.63	2	0.87
ODISHA	11536	5410	46.9	1680	14.56	1510	13.09	181	1.57	2755	23.88
PUNJAB	2090	717	34.31	434	20.77	352	16.84	432	20.67	155	7.42
RAJASTHAN	8642	3110	35.99	1720	19.9	1222	14.14	1590	18.4	1000	11.57
SIKKIM	81	26	32.1	7	8.64	22	27.16	18	22.22	8	9.88
TAMIL NADU	2676	943	35.24	869	32.47	489	18.27	328	12.26	47	1.76
TELANGANA	1278	621	48.59	186	14.55	386	30.2	30	2.35	55	4.3
TRIPURA	330	33	10	59	17.88	136	41.21	95	28.79	7	2.12
UTTARAKHAND	2670	1065	39.89	385	14.42	170	6.37	320	11.99	730	27.34
UP	19671	11894	60.46	2884	14.66	702	3.57	717	3.64	3474	17.66

State Name	Total Number Of Villages	Primary	%	Middle School	%	High School	%	Senior Secondary School	%	No School	%
All India	111049	52563	47.33	23603	21.25	12162	10.95	7166	6.45	15555	14.01
ANDHRA PRADESH	2822	1248	44.22	429	15.2	896	31.75	95	3.37	154	5.46
ARUNACHAL	213	87	40.85	47	22.07	11	5.16	6	2.82	62	29.11
ASSAM	4584	2663	58.09	661	14.42	654	14.27	151	3.29	455	9.93
BIHAR	8763	3067	35	3292	37.57	570	6.5	341	3.89	1493	17.04
CHHATTISGAR H	4077	1485	36.42	1591	39.02	416	10.2	423	10.38	162	3.97
GUJARAT	3150	2332	74.03	122	3.87	480	15.24	165	5.24	51	1.62
HARYANA	1122	277	24.69	272	24.24	182	16.22	328	29.23	63	5.61
HIMACHAL	344	87	25.29	47	13.66	15	4.36	40	11.63	155	45.06
J&K	471	89	18.9	212	45.01	105	22.29	35	7.43	30	6.37
JHARKHAND	5747	2881	50.13	1691	29.42	339	5.9	125	2.18	711	12.37
KARNATAKA	6173	2462	39.88	1435	23.25	861	13.95	248	4.02	1167	18.9
MP	10282	4227	41.11	3765	36.62	744	7.24	521	5.07	1025	9.97
MAHARASHTR A	5000	2010	50.50	811	16.22	800	16.00	207	4.14	400	8.00

Top and Bottom 10 Ranked GPs [Mission Antyodaya]

TOP 10

#	State Name	District Name	Block Name	Gram Panchayat Name	Score	National Rank
1	TELANGANA (36)	SANGAREDDY (691)	RAMCHANDRAPURAM (5299)	TELLAPUR (206810)	95	1
2	ANDHRA PRADESH (28)	CHITTOOR (503)	KALIKIRI (4765)	PARAPATLA (197147)	93	2
3	ANDHRA PRADESH (28)	VISAKHAPATANAM (520)	CHEEDIKADA (5588)	CHEEDIKADA (211829)	92	3
4	ANDHRA PRADESH (28)	CHITTOOR (503)	THAVANAMPALLE (4802)	EGUVA THAVANAMPALLE (197857)	91	4
5	ANDHRA PRADESH (28)	EAST GODAVARI (505)	KAJULURU (4882)	KAJULURU (199218)	91	4
6	ANDHRA PRADESH (28)	KRISHNA (510)	UNGUTURU (5142)	UNGUTURU (203772)	91	4
7	ANDHRA PRADESH (28)	KRISHNA (510)	UNGUTURU (5142)	INDUPALLI (203757)	90	5
8	KARNATAKA (29)	BELAGAVI (527)	GOKAK (5775)	KOUJALAGI (215864)	90	5
9	HARYANA (6)	SONIPAT (75)	SONIPAT (559)	BARWASANI (33095)	89	6
10	ANDHRA PRADESH (28)	ANANTAPUR (502)	RODDAM (4735)	BUCHARLA (196532)	89	6

LAST 10

#	State Name	District Name	Block Name	Gram Panchayat Name	Score	National Rank
1	MEGHALAYA (17)	SOUTH GARO HILLS (277)	GASUAPARA (2473)	ATABENGAGRE (995962)	14	81
2	JHARKHAND (20)	GIRIDIH (329)	PIRTAND (3141)	BHARATI CHALKARI (112972)	14	81
3	JHARKHAND (20)	GUMLA (331)	GHAGHRA (3156)	BIMARLA (113265)	14	81
4	JHARKHAND (20)	GIRIDIH (329)	DEORI (3134)	CHAHAL (112749)	14	81
5	JHARKHAND (20)	GIRIDIH (329)	GANDEY (3137)	GALKUNDA (112859)	14	81
6	CHHATTISGARH (22)	SUKMA (642)	SUKMA (3623)	GONDPALLI (123656)	14	81
7	CHHATTISGARH (22)	BIJAPUR (636)	BIJAPUR (3616)	KADER (123410)	14	81
8	CHHATTISGARH (22)	BIJAPUR (636)	BIJAPUR (3616)	KANDULNAR (123413)	14	81
9	WEST BENGAL (19)	BANKURA (305)	RANIBUNDH (2789)	PUDDI (108425)	14	81
10	JHARKHAND (20)	GUMLA (331)	GHAGHRA (3156)	KUHIPAT (113273)	13	82

Analysis of Top and Bottom Ranked SHGs on Scorecard

TOP
RANKED
GPS

% OF HOUSEHOLDS REPORTING

#	GP	STATE	Total HHs	On Deprivation Criteria		On Exclusion Criteria		Total Score [x/100]	HHs Mobilized under SHGs		Total Score [x/10]
1	TELLAPUR	TELANGANA	6247	398	6%	5595	90%	95	1534	25%	6
2	PARAPATLA	A.P.	220	47	21%	165	75%	93	319	145%	8
3	EGUVA THAVANAMPALLE	A.P.	1087	423	39%	508	47%	91	441	41%	5
4	KOUJALAGI	KARNATAKA	2087	641	31%	1028	49%	90	754	36%	1
5	BARWASANI	HARYANA	1080	408	38%	627	58%	89	86	8%	1
6	BUCHARLA	A.P.	396	70	18%	231	58%	89	319	81%	6

% OF HOUSEHOLDS REPORTING

BOTTOM
RANKED
GPS

#	GP	STATE	Total HHs	On Deprivation Criteria		On Exclusion Criteria		Total Score [x/100]	HHs Mobilized under SHGs		Total Score [x/10]
1	ATABENGAGRE	MEGHALAYA	18	17	94%	1	6%	14	0	0%	0
2	BHARATI CHALKARI	JHARKHAND	1291	990	77%	92	7%	14	783	61%	0
3	BIMARLA	JHARKHAND	869	412	47%	349	40%	14	703	81%	0
4	CHAHAL	JHARKHAND	1361	894	66%	171	13%	14	356	26%	0
5	GALKUNDA	JHARKHAND	1455	638	44%	398	27%	14	0	0%	NA
6	GONDPALLI	CHHATTISGARH	236	224	95%	12	5%	14	0	0%	0
7	KADER	CHHATTISGARH	95	53	56%	3	3%	14	0	0%	0
8	KANDULNAR	CHHATTISGARH	243	107	44%	76	31%	14	0	0%	NA

Response from top Ranked
GPs

Response for Top Sample GPs

2. Basic Parameters

S.NO	Question	Census 2011 Status	Survey 2017 Status
1	Total Population	NA	4621
2	Male	NA	2224
3	Female	NA	2397
4	Total Household	NA	2783
5	Total number of SHGs promoted	NA	156
6	Total Area (in hectares)	NA	2200
7	Net sown Area(In hectares)	NA	200
8	Total Un irrigated land area (in hectare)	NA	10
9	Area irrigated (in hectare)	NA	190

3. Key Infrastructure Parameters

10	% households engaged exclusively in Farm activities	NA	40
11	% households engaged exclusively in Non-farm activities	NA	60
12	Availability of banks	NA	Yes
13	Availability of bank/Business correspondent with internet connectivity	NA	—
14	Availability of ATM	NA	No (Nearest facility 2-5 kms)
15	Whether the village is connected to All weather road	NA	Yes
16	Whether village has an internal cc/ brick road	NA	Yes
17	Availability of Public Transport	NA	Bus
18	Availability of Internet Café/Common Service Center	NA	Yes
19	Availability of electricity for domestic use(in Hrs)	NA	>12 hrs
20	Availability of Public Distribution System (PDS)	NA	Yes
21	Availability of markets	NA	Weekly Haat
22	Availability of Piped tap water	NA	100% habitations covered
23	Availability of Telephone Services	NA	Mobile
24	Total no of household using clean energy (LPG/Bio gas)	NA	2250
25	No of household with kuccha wall and kuccha roof	NA	200
26	Availability of Post office/Sub-Post office	NA	Yes
27	Availability of School	NA	High School

28	Availability of Vocational Educational Centre/ITI/RSETI/DDU-GKY	NA	Yes
29	Availability of Sub centre /PHC/CHC	NA	Sub Centre
30	Availability of Veterinary Clinic Hospital	NA	Yes
31	Availability of drainage facilities	NA	Open Pucca Drainage Covered with Tiles Slabs

4. Economic development and livelihoods

32	Availability of Soil Testing Centres	NA	Yes
33	Availability of government Seed	NA	Yes
34	Availability of Fertilizer Shop	NA	Yes

5. Health, nutrition and sanitation

35	Community waste disposal system	NA	Yes
36	Community bio gas or recycle of waste for production use	NA	Yes
37	Is the village Open Defecation Free	NA	Yes
38	Availability Of Aanganwadi Centre	NA	Yes
39	No of total children in the age group of 0-3 years	NA	244
40	No of children aged 0-3 years registered under Aanganwadi	NA	244
41	No of children aged 0-3 years immunized	NA	244
42	No of children categorized as Non-Stunted as per ICDS record	NA	244

6. Women Empowerment

43	No. of households mobilized into SHGs	NA	1716
44	No. of households mobilized into Producer Groups (PGs)	NA	1576
45	No. of households supported by village based Agricultural Extension Workers	NA	200
46	No. of households supported by village based Livestock Extension Workers	NA	1780

7. Financial Inclusion

47	No. of SHGs accessed bank loans	NA	156
----	---------------------------------	----	-----

State	TELANGANA
District	SANGAREDDY
Block	RAMCHANDRAPURAM
Gram Panchayat	TELLAPUR

Response for Top Sample GPs

2. Basic Parameters			
S.NO	Question	Census 2011 Status	Survey 2017 Status
1	Total Population	795	795
2	Male	391	393
3	Female	404	402
4	Total Household	215	150
5	Total number of SHGs promoted	NA	21
6	Total Area (in hectares)	939	939
7	Net sown Area(In hectares)	118.18	118.18
8	Total Un irrigated land area (in hectare)	404.29	404.29
9	Area irrigated (in hectare)	98.34	98.34
3. Key Infrastructure Parameters			
10	% households engaged exclusively in Farm activitie	NA	50
11	% households engaged exclusively in Non-farm activities	NA	50
12	Availability of banks	No	Yes
13	Availability of bank/Business correspondent with internet connectivity	NA	–
14	Availability of ATM	No	Yes
15	Whether the village is connected to All weather road	Yes	Yes
16	Whether village has an internal cc/ brick road	NA	Yes
17	Availability of Public Transport	Bus	Bus
18	Availability of Internet Café/Common Service Center	No	Yes
19	Availability of electricity for domestic use(In Hrs)	>12 hrs	>12 hrs
20	Availability of Public Distribution System (PDS)	Yes	Yes
21	Availability of markets	None	Weekly Haat
22	Availability of Piped tap water	100% habitations covered	100% habitations covered
23	Availability of Telephone Services	Both	Mobile
24	Total no of household using clean energy (LPG/Bio gas)	NA	150
25	No of household with kuccha wall and kuccha roof	0	0
26	Availability of Post office/Sub-Post office	No	Yes
27	Availability of School	Primary School	Primary School

28	Availability of Vocational Educational Centre/ITI/RSETI/DDU-GKY	No	Yes
29	Availability of Sub centre /PHC/CHC	None	PHC
30	Availability of Veterinary Clinic Hospital	No	Yes
31	Availability of drainage facilities	Open Kuccha Drainage	Closed Drainage

4. Economic development and livelihoods

32	Availability of Soil Testing Centres	NA	Yes
33	Availability of government Seed	NA	Yes
34	Availability of Fertilizer Shop	NA	Yes

5. Health, nutrition and sanitation

35	Community waste disposal system	No	Yes
36	Community bio gas or recycle of waste for production use	No	Yes
37	Is the village Open Defecation Free	No	Yes
38	Availability Of Aanganwadi Centre	Yes	Yes
39	No of total children in the age group of 0-3 years	NA	30
40	No of children aged 0-3 years registered under Aanganwadi	NA	30
41	No of children aged 0-3 years immunized	NA	30
42	No of children categorized as Non-Stunted as per ICDS record	NA	30

6. Women Empowerment

43	No. of households mobilized into SHGs	NA	150
44	No. of households mobilized into Producer Groups (PGs)	NA	10
45	No. of households supported by village based Agricultural Extension Workers	NA	150
46	No. of households supported by village based Livestock Extension Workers	NA	40

7. Financial Inclusion

47	No. of SHGs accessed bank loans	NA	150
----	---------------------------------	----	-----

State	ANDHRA PRADESH
District	CHITTOOR
Block	KALIKIRI
Gram Panchayat	PARAPATLA

Response for Top Sample GPs

2. Basic Parameters			
S.NO	Question	Census 2011 Status	Survey 2017 Status
1	Total Population	2333	2333
2	Male	1233	1233
3	Female	1100	1100
4	Total Household	670	670
5	Total number of SHGs promoted	NA	57
6	Total Area (in hectares)	374	374
7	Net sown Area(In hectares)	310.82	310
8	Total Un irrigated land area (in hectare)	10.11	10
9	Area irrigated (in hectare)	310.82	310
3. Key Infrastructure Parameters			
10	% households engaged exclusively in Farm activities	NA	0
11	% households engaged exclusively in Non-farm activities	NA	0
12	Availability of banks	Yes	Yes
13	Availability of bank/Business correspondent with internet connectivity	NA	–
14	Availability of ATM	No	Yes
15	Whether the village is connected to All weather road	Yes	Yes
16	Whether village has an internal cc/ brick road	NA	Yes
17	Availability of Public Transport	Bus	Bus
18	Availability of Internet Café/Common Service Center	No	Yes
19	Availability of electricity for domestic use(in Hrs)	>12 hrs	>12 hrs
20	Availability of Public Distribution System (PDS)	Yes	Yes
21	Availability of markets	None	Mandis
22	Availability of Piped tap water	100% habitations covered	100% habitations covered
23	Availability of Telephone Services	Both	Mobile
24	Total no of household using clean energy (LPG/Bio gas)	NA	670
25	No of household with kuccha wall and kuccha roof	124	230
26	Availability of Post office/Sub-Post office	Yes	Yes
27	Availability of School	High School	High School

28	Availability of Vocational Educational Centre/ITI/RSETI/DDU-GKY	No	Yes
29	Availability of Sub centre /PHC/CHC	PHC	PHC
30	Availability of Veterinary Clinic Hospital	Yes	Yes
31	Availability of drainage facilities	None	Closed Drainage

4. Economic development and livelihoods

32	Availability of Soil Testing Centres	NA	Yes
33	Availability of government Seed	NA	Yes
34	Availability of Fertilizer Shop	NA	Yes

5. Health, nutrition and sanitation

35	Community waste disposal system	No	Yes
36	Community bio gas or recycle of waste for production use	No	Yes
37	Is the village Open Defecation Free	No	Yes
38	Availability Of Aanganwadi Centre	Yes	Yes
39	No of total children in the age group of 0-3 years	NA	108
40	No of children aged 0-3 years registered under Aanganwadi	NA	60
41	No of children aged 0-3 years immunized	NA	108
42	No of children categorized as Non-Stunted as per ICDS record	NA	108

6. Women Empowerment

43	No. of households mobilized into SHGs	NA	630
44	No. of households mobilized into Producer Groups (PGs)	NA	630
45	No. of households supported by village based Agricultural Extension Workers	NA	670
46	No. of households supported by village based Livestock Extension Workers	NA	670

7. Financial Inclusion

47	No. of SHGs accessed bank loans	NA	57
----	---------------------------------	----	----

State	ANDHRA PRADESH
District	KRISHNA
Block	UNGUTURU
Gram Panchayat	UNGUTURU

Response from Bottom

Ranked GPs

Response for Bottom Ranked GPs

2. Basic Parameters			
S.NO	Question	Census 2011 Status	Survey 2017 Status
1	Total Population	1068	1068
2	Male	494	494
3	Female	574	574
4	Total Household	236	236
5	Total number of SHGs promoted	NA	0
6	Total Area (in hectares)	3941.06	3941.06
7	Net sown Area(In hectares)	752.62	752.62
8	Total Un irrigated land area (in hectare)	752.62	752.62
9	Area irrigated (in hectare)	0	0
3. Key Infrastructure Parameters			
10	% households engaged exclusively in Farm activitie	NA	96
11	% households engaged exclusively in Non-farm activities	NA	4
12	Availability of banks	No	No (Nearest facilityMore than 10 kms)
13	Availability of bank/Business correspondent with internet connectivity	NA	No
14	Availability of ATM	No	No (Nearest facilityMore than 10 kms)
15	Whether the village is connected to All weather road	Yes	Yes
16	Whether village has an internal cc/ brick road	NA	No
17	Availability of Public Transport	None	None (Nearest facilityMore than 10 kms)
18	Availability of Internet Café/Common Service Center	No	No (Nearest facilityMore than 10 kms)
19	Availability of electricity for domestic use(in Hrs)	4-8 Hrs	1-4 hrs
20	Availability of Public Distribution System (PDS)	Yes	No (Nearest facilityMore than 10 kms)
21	Availability of markets	Mandis	None (Nearest facility)
22	Availability of Piped tap water	Not Covered	None (Nearest facilityMore than 10 kms)
23	Availability of Telephone Services	None	None (Nearest facilityMore than 10 kms)
24	Total no of household using clean energy (LPG/Bio gas)	NA	8

25	No of household with kuccha wall and kuccha roof	101	101
26	Availability of Post office/Sub-Post office	No	No (Nearest facilityMore than 10 kms)
27	Availability of School	Primary School	Primary School
28	Availability of Vocational Educational Centre/ITI/RSETI/DDU-GKY	No	No (Nearest facilityMore than 10 kms)
29	Availability of Sub centre /PHC/CHC	None	None (Nearest facilityMore than 10 kms)
30	Availability of Veterinary Clinic Hospital	No	No (Nearest facilityMore than 10 kms)
31	Availability of drainage facilities	None	None

4. Economic development and livelihoods			
32	Availability of Soil Testing Centres	NA	No (Nearest facilityMore than 10 kms)
33	Availability of government Seed	NA	No (Nearest facilityMore than 10 kms)
34	Availability of Fertilizer Shop	NA	No (Nearest facilityMore than 10 kms)

5. Health, nutrition and sanitation			
35	Community waste disposal system	No	No
36	Community bio gas or recycle of waste for production use	No	No
37	Is the village Open Defecation Free	No	No
38	Availability Of Aanganwadi Centre	Yes	Yes
39	No of total children in the age group of 0-3 years	NA	101
40	No of children aged 0-3 years registered under Aanganwadi	NA	101
41	No of children aged 0-3 years immunized	NA	0
42	No of children categorized as Non-Stunted as per ICDS record	NA	4

6. Women Empowerment			
43	No. of households mobilized into SHGs	NA	0
44	No. of households mobilized into Producer Groups (PGs)	NA	0
45	No. of households supported by village based Agricultural Extension Workers	NA	0
46	No. of households supported by village based Livestock Extension Workers	NA	0

7. Financial Inclusion			
47	No. of SHGs accessed bank loans	NA	0

State	CHHATTISGARH
District	SUKMA
Block	GONDPALLI
Gram Panchayat	GONDPALLI

Response for Bottom Ranked GPs

2. Basic Parameters			
S.NO	Question	Census 2011 Status	Survey 2017 Status
1	Total Population	600	600
2	Male	284	284
3	Female	316	316
4	Total Household	100	100
5	Total number of SHGs promoted	NA	0
6	Total Area (in hectares)	289.99	289.99
7	Net sown Area(In hectares)	39.59	39.59
8	Total Un irrigated land area (in hectare)	0	80
9	Area irrigated (in hectare)	0	209.99
3. Key Infrastructure Parameters			
10	% households engaged exclusively in Farm activitie	NA	0
11	% households engaged exclusively in Non-farm activities	NA	0
12	Availability of banks	No	No (Nearest facilityMore than 10 kms)
13	Availability of bank/Business correspondent with internet connectivity	NA	No
14	Availability of ATM	No	No (Nearest facilityMore than 10 kms)
15	Whether the village is connected to All weather road	Yes	No
16	Whether village has an internal cc/ brick road	NA	—
17	Availability of Public Transport	Bus	None (Nearest facilityMore than 10 kms)
18	Availability of Internet Café/Common Service Center	No	Yes
19	Availability of electricity for domestic use(in Hrs)	None	1-4 hrs
20	Availability of Public Distribution System (PDS)	No	Yes
21	Availability of markets	Weekly Haat	None (Nearest facilityMore than 10 kms)
22	Availability of Piped tap water	Not Covered	None (Nearest facilityMore than 10 kms)
23	Availability of Telephone Services	Both	None (Nearest facilityMore than 10 kms)
24	Total no of household using clean energy (LPG/Bio gas)	NA	0

4. Economic development and livelihoods			
25	No of household with kuccha wall and kuccha roof	104	50
26	Availability of Post office/Sub-Post office	Yes	No (Nearest facilityMore than 10 kms)
27	Availability of School	High School	Primary School
28	Availability of Vocational Educational Centre/ITI/RSETI/DDU-GKY	No	No (Nearest facilityMore than 10 kms)
29	Availability of Sub centre /PHC/CHC	Sub Centre	None (Nearest facilityMore than 10 kms)
30	Availability of Veterinary Clinic Hospital	No	No (Nearest facilityMore than 10 kms)
31	Availability of drainage facilities	None	None
5. Health, nutrition and sanitation			
32	Availability of Soil Testing Centres	NA	No (Nearest facilityMore than 10 kms)
33	Availability of government Seed	NA	No (Nearest facilityMore than 10 kms)
34	Availability of Fertilizer Shop	NA	No (Nearest facilityMore than 10 kms)
35	Community waste disposal system	No	No
36	Community bio gas or recycle of waste for production use	No	No
37	Is the village Open Defecation Free	No	No
38	Availability Of Aanganwadi Centre	No	No (Nearest facilityMore than 10 kms)
39	No of total children in the age group of 0-3 years	NA	50
40	No of children aged 0-3 years registered under Aanganwadi	NA	0
41	No of children aged 0-3 years immunized	NA	0
42	No of children categorized as Non-Stunted as per ICDS record	NA	0
6. Women Empowerment			
43	No. of households mobilized into SHGs	NA	0
44	No. of households mobilized into Producer Groups (PGs)	NA	0
45	No. of households supported by village based Agricultural Extension Workers	NA	0
46	No. of households supported by village based Livestock Extension Workers	NA	0
7. Financial Inclusion			
47	No. of SHGs accessed bank loans	NA	0

State	<i>JHARKHAND</i>
District	<i>GIRIDH</i>
Block	<i>TISRI</i>
Gram Panchayat	<i>BARAWADIH</i>

Response for Bottom Ranked GPs

2. Basic Parameters			
S.NO	Question	Census 2011 Status	Survey 2017 Status
1	Total Population	198	198
2	Male	112	112
3	Female	86	86
4	Total Household	42	42
5	Total number of SHGs promoted	NA	0
6	Total Area (in hectares)	233.62	233.62
7	Net sown Area(In hectares)	177.72	177.72
8	Total Un irrigated land area (in hectare)	177.72	177.72
9	Area irrigated (in hectare)	0	0
3. Key Infrastructure Parameters			
10	% households engaged exclusively in Farm activitie	NA	95
11	% households engaged exclusively in Non-farm activities	NA	5
12	Availability of banks	No	No (Nearest facilityMore than 10 kms)
13	Availability of bank/Business correspondent with internet connectivity	NA	No
14	Availability of ATM	No	No (Nearest facilityMore than 10 kms)
15	Whether the village is connected to All weather road	No	No
16	Whether village has an internal cc/ brick road	NA	-
17	Availability of Public Transport	None	None (Nearest facilityMore than 10 kms)
18	Availability of Internet Café/Common Service Center	No	No (Nearest facilityMore than 10 kms)
19	Availability of electricity for domestic use(in Hrs)	None	None
20	Availability of Public Distribution System (PDS)	No	No (Nearest facilityMore than 10 kms)
21	Availability of markets	None	None (Nearest facilityMore than 10 kms)
22	Availability of Piped tap water	Not Covered	None (Nearest facilityMore than 10 kms)
23	Availability of Telephone Services	None	None (Nearest facilityMore than 10 kms)

24	Total no of household using clean energy (LP/G/Bio gas)	NA	2
25	No of household with kuccha wall and kuccha roof	46	40
26	Availability of Post office/Sub-Post office	No	No (Nearest facilityMore than 10 kms)
27	Availability of School	None	None (Nearest facility2-5 kms)
28	Availability of Vocational Educational Centre/ITI/RSETI/DDU-GKY	No	No (Nearest facilityMore than 10 kms)
29	Availability of Sub centre /PHC/CHC	None	None (Nearest facilityMore than 10 kms)
30	Availability of Veterinary Clinic Hospital	No	No (Nearest facilityMore than 10 kms)
31	Availability of drainage facilities	None	None

4. Economic development and livelihoods			
32	Availability of Soil Testing Centres	NA	No (Nearest facilityMore than 10 kms)
33	Availability of government Seed	NA	No (Nearest facilityMore than 10 kms)
34	Availability of Fertilizer Shop	NA	No (Nearest facilityMore than 10 kms)

5. Health, nutrition and sanitation			
35	Community waste disposal system	No	No
36	Community bio gas or recycle of waste for production use	No	No
37	Is the village Open Defecation Free	No	No
38	Availability Of Aanganwadi Centre	Yes	Yes
39	No of total children in the age group of 0-3 years	NA	25
40	No of children aged 0-3 years registered under Aanganwadi	NA	25
41	No of children aged 0-3 years immunized	NA	25
42	No of children categorized as Non-Stunted as per ICDS record	NA	2

6. Women Empowerment			
43	No. of households mobilized into SHGs	NA	0
44	No. of households mobilized into Producer Groups (PGs)	NA	0
45	No. of households supported by village based Agricultural Extension Workers	NA	0
46	No. of households supported by village based Livestock Extension Workers	NA	0

7. Financial Inclusion			
47	No. of SHGs accessed bank loans	NA	0

State	CHHATTISGARH
District	SUKMA
Block	GONDERAS
Gram Panchayat	PUJARIPAL

"Two things are infinite: the universe and
human stupidity;
and I'm not sure about the universe."

~Albert Einstein, in
(The World As I See it)

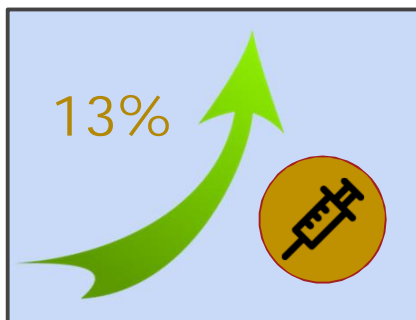
Thank You

Thank You

State led interventions in convergence

- Examples include
 - Karnataka - [Chief Minister's Grama Vikasa](#); Andhra Pradesh - [Smart village, Smart Ward](#)
 - Telangana - Gram Jyothi ;
 - Chhattisgarh, Haryana, Gujarat, Maharashtra - [Vidhayak Adarsh Gram Yojana](#)
 - Haryana - Swa-Prerit Adarsh Gram Yojana
- Remarkable innovations and outcomes
 - Comm [Gram Jyothi](#) : unity participation, Planning, Indicator based monitoring,
 - Use of social media, Technology adoption, Voluntarism , Social ethics
- Some of the areas require further attention,
 - Fixated on budget allocation and fund releases
 - Nearly all the funds are being utilised for infrastructure
 - Lack of convergence with departments / schemes outside PR/RD
- Under Mission Antyodaya, objectives of all these programmes are achieved better

Achievements by SAGY Gram Panchayats



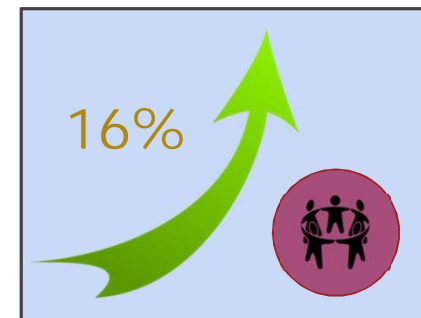
Increase in the
Percentage of children
immunised (0-6 years)



Increase in the
Percentage of farmers
with soil health cards



Increase in the
Percentage of eligible
persons receiving
disability pension



Increase in the
Percentage of women
brought into SHGs

[Back](#)

- Schooling is not the same as learning. In Kenya, Tanzania, and Uganda, when grade 3 students were asked recently to read a sentence such as "The name of the dog is Puppy", three-quarters did not understand what it said. In rural India, just under three quarters of students in grade 3 could not solve a two-digit subtraction such as $46-17$, and by grade 5 half could still not do so. Although the skills of Brazilian 15-year olds have improved, at their current rate of improvement they won't reach the rich country average score in math for 75 years. In reading it will take more than 260 years. Within countries, learning outcomes are almost always much worse for the disadvantaged. In Uruguay, poor children in grade 6 are assessed as "not competent" in math at five times the rate of wealthy children. Moreover, such data are for children and youth lucky enough to be in school. Some 260 million aren't even enrolled in primary or secondary school.

Learning outcomes won't change unless education systems take learning seriously and use learning as a guide and metric. This idea can be summarized as "all for learning". As this Section explains, a commitment to all for learning and thus to learning for all-implies three complementary strategies:

1. Assess Learning – to make it a serious goal. Measure and track learning better; use the results to guide action
2. Act on evidence – to make schools work for all learners. Use evidence to guide innovation and practice.
3. Align actors – to make the whole system work for learning. Tackle the technical and political barriers to learning at scale.

- ~~These three strategies depend on one another.~~ Adopting a learning metric without any credible way to achieve learning goals will simply lead to frustration. School level innovations without a learning metric could take schools off course, and without the system-level support they could prove ephemeral. And system-level commitment to learning without school-level innovation, and without learning measures to guide the reforms, is unlikely to amount to more than aspirational rhetoric. But together, the three strategies can create change for the better.

Nomination of a State Nodal Officer

- **SRLM is the nodal agency for Baseline survey.**
- **Each SRLM is required to appoint a senior State Mission Professional as the state nodal person;**
- **Preferably, State Mission Director may act as the State Nodal Officer.**
- **Similarly, each Mission Antyodaya district will have the PD, DRDA/DRDC as the district nodal officer.**

Training of Resource Teams

- The training programme for the functionaries under supervision and guidance of NIRD&PR.
- The training would be organized in a cascade mode.
- NIRD will also train about 60 professionals empanelled with them and train them as resource persons for conducting training in the States.
- Each SRLM will identify team of 6 - 8 resource persons from each district covered under Mission Antyodaya.
- These resource persons may preferably be chosen from the persons engaged earlier in Intensive Participatory Planning Exercise (IPPE-II).
- The Members of the national team will undertake orientation of the identified district resource persons.
- For each state atleast two national resource persons will be allocated for training district resource persons.
- The district resource persons will impart training to CRPs in intensive areas of NRLM and Grameen Rozgar Sewaks in districts which are presently not covered under NRLM.
- **The State Governments could also involve students of higher educational institutions in this planning exercise and associate one student with one team for each Gram Panchayat. These students would also get training along with the CRPs and GRS.**